



POST-SECONDARY • 5-YEAR COURSE

# The school of Innovation and Information Technology

Academic year 2020/2021



14 campuses in France

Barcelona • Berlin • Brussels • Cotonou • Geneva\* • Madrid\* • New York\*\* • Tirana

\*Campus opening soon.

\*\*Program created by Epitech at the *Technology and Media School*, a school in the IONIS Education Group.

# It's at Epitech and nowhere else

Epitech is the school of Software Development and IT expertise. It now offers programs in more than 20 campuses around the World, mainly in Europe. Epitech is neither a technical institution nor an Engineering school; it is a school that offers an innovative education model in line with the changing world of Information Technology. Choosing Epitech means choosing a high-level school. It is an ambitious choice. It means being certain that you will develop the right skills for a lifetime, gaining the capacity to interact with different sectors of a company, assimilating the importance of the international dimension and acquiring soft skills that really matter in the professional context.



## WHY EPITECH?



Epitech is the **leading IT school in Europe**, with almost 20 campuses



Accredited program equivalent to **Bachelor + Master Degree**



**Innovative project-based** learning methodologies from day 1



**Paid internships** from 2<sup>nd</sup> year



Development of a **final entrepreneurial project** at the end of the program



**99% of graduates** currently employed

“  
THE BEST PART ABOUT INNOVATION  
IS THE GUARANTEE OF FINDING YOURSELF  
IN AN OPEN AND RESPECTFUL  
LEARNING ENVIRONMENT  
THAT ENCOURAGES A VARIETY  
OF ENCOUNTERS, EXPERIENCES AND  
SOLUTIONS.  
”



## Admissions Process

1

### Admissions Application

The process begins once you have completed the online admissions form at [www.epitech.es](http://www.epitech.es)

2

### Required Documentation

In addition to your online admission form, you should send the following documents to your Admissions contact person:

- Photocopy of your ID card or passport.
- Official high school diploma and transcripts.

3

### Admissions Test

As part of the admissions process, all applicants to the program are required to take the English and logical reasoning tests.

4

### Personal Interview

All applicants must finally undergo an admissions interview with the Admissions team.



# An international network of 90 partners

The fourth year abroad is a real asset in our students' educational path. So to help students get the best in computing, the school has gradually set up a network of prestigious partners all over the world.

This variety of options enables the students to find the right destination for them, in terms of local culture as well as the courses on offer.

Some of our most popular international destinations include:



## UNITED STATES

- Boston University
- California State University, Long Beach
- California State University, San Marcos
- Murray State University
- The College at Brockport, State University of New York
- University of California, Berkeley
- University of California, San Diego
- Wayne State University



## CANADA

- Concordia University
- Université Laval
- Université du Québec in Rimouski



## UNITED KINGDOM

- Cardiff Metropolitan University
- Heriot-Watt University
- University of Kent



## GERMANY

- Baden-Württemberg Cooperative State University
- Berlin Epitech Campus
- Cologne University of Applied Sciences
- Hof University of Applied Sciences
- Stuttgart University of Applied Sciences



## CHINA

- Beijing Institute of Technology
- Beijing Jiaotong University
- Harbin Engineering University
- Hong Kong University of Science and Technology
- Northwestern Polytechnical University
- The Chinese University of Hong Kong
- Tianjin University
- Tongji University
- Tsinghua University
- Wuhan University



## SOUTH KOREA

- Chung-Ang University
- Dankook University
- Inha University
- Keimyung University
- Korea University
- Soongsil University

## Trusted by companies

Since it was founded, Epitech has been forming tailor-made partnerships with companies on all its campuses. This approach allows companies to help the school place innovation at the heart of the different economic sectors, at the center of technologies and social issues. These "Player" companies are committed to taking part in the various initiatives organized by the school.



Microsoft

everis



privalia



sopra



steria



webfleet solutions

a Bridgestone company

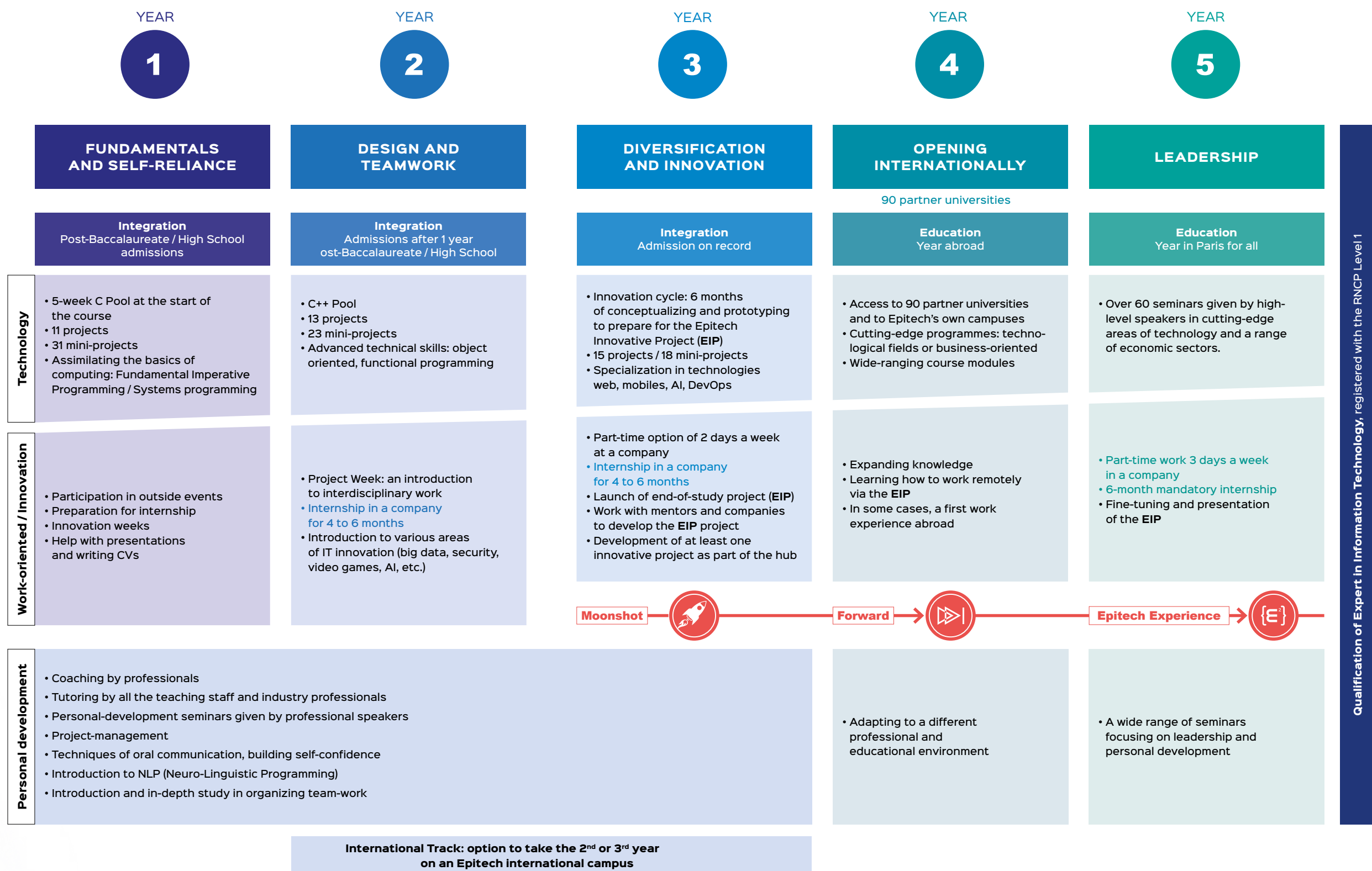
WORLD



SENSING



# Five years to become a recognized expert



# Success in numbers

Epitech offers job opportunities equal to those provided by traditional top level higher education institutions. The Epitech curriculum emphasizes three skills that are increasingly in demand: adaptability, self-development and project sense.

## TYPE OF CONTRACT



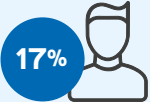
PERMANENT CONTRACT



FIXED CONTRACT



MANAGEMENT



NON-MANAGEMENT

## KEY NUMBERS



AVERAGE ANNUAL GROSS SALARY\*\*



OF STUDENTS HAVE SET UP A COMPANY DURING THEIR COURSE YEAR



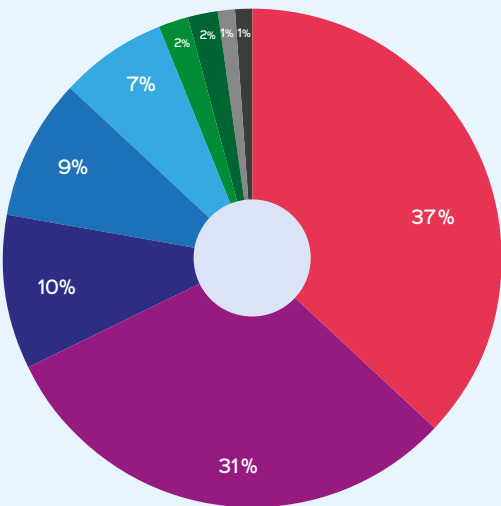
OF THESE COMPANIES ARE STILL ACTIVE



OF ALUMNI ARE STILL ENTREPRENEURS

\*\* Average gross salary in 2018 for Epitech graduates excluding bonuses.

## FUNCTIONS



Developer

Engineer

Consultant

Full-Stack Developer

Others

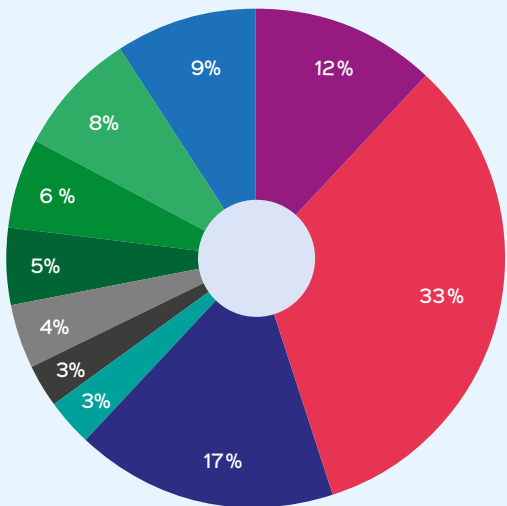
Project Manager

Technical Director

Systems and Networks Administrator

CEO

## BUSINESS AREAS



Consulting / Business and Technology Services / Auditing

Software

Retail

Telecom/Media

Finance (Banking, Insurance)

Video Gaming

Industry / Defense

Education

Health

Others



**BARCELONA** • barcelona@epitech.eu

**BERLIN** • berlin@epitech.eu

**BORDEAUX** • bordeaux@epitech.eu

**BRUSSELS** • bruxelles@epitech.eu

**COTONOU** • cotonou@epitech.eu

**GENEVA** • geneve@epitech.eu

**LILLE** • lille@epitech.eu

**LYON** • lyon@epitech.eu

**MADRID** • madrid@epitech.eu

**MARSEILLE** • marseille@epitech.eu

**MONTPELLIER** • montpellier@epitech.eu

**MULHOUSE** • mulhouse@epitech.eu

**NANCY** • nancy@epitech.eu

**NANTES** • nantes@epitech.eu

**NEW YORK\*** • new-york@epitech.eu

**NICE** • nice@epitech.eu

**PARIS** • paris@epitech.eu

**RENNES** • rennes@epitech.eu

**SAINT-ANDRÉ (Réunion)** • reunion@epitech.eu

**STRASBOURG** • strasbourg@epitech.eu

**TIRANA** • tirana@epitech.eu

**TOULOUSE** • toulouse@epitech.eu

#### **EPITECH BARCELONA**

c/ Joan Miró, 21

08005 Barcelona

Tel. +34 93 797 88 14

[www.epitech.es](http://www.epitech.es)

[barcelona@epitech.eu](mailto:barcelona@epitech.eu)



**[www.epitech.eu](http://www.epitech.eu)**

Qualification of Expert in Information Technology, NSF code 326n, Professional Certification level I (FR) and level 7 (EU) registered with the RNCP by order of 30/07/2018 published in the J.O. (Government gazette of the French Republic) on 07/08/2018. Non-profit-making association (Law 1901). School officially recognised by the French State.

\*Programme created by Epitech at the Technology and Media School, a school in the IONIS Education Group.  
Printed November 2019. Private establishment of higher education. This school is a member of IONIS

IONIS