

{EPITECH.}

“
THE BEST PART ABOUT INNOVATION
IS THE GUARANTEE OF FINDING YOURSELF
IN AN OPEN AND RESPECTFUL
LEARNING ENVIRONMENT
THAT ENCOURAGES A VARIETY
OF ENCOUNTERS, EXPERIENCES AND
SOLUTIONS.
”



Admissions Process

1

Admissions Application

The process begins once
you have completed the
online admissions form at
www.epitech.es

2

Required Documentation

In addition to your online
admission form, you
should send the following
documents to your
Admissions contact person:

- Photocopy of your
ID card or passport.
- Official high school
diploma and transcripts.

3

Admissions Test

As part of the admissions
process, all applicants to
the program are required
to take the English and
logical reasoning tests.

4

Personal Interview

All applicants must finally
undergo an admissions
interview with the
Admissions team.

BARCELONA • barcelona@epitech.eu
BERLIN • berlin@epitech.eu
BORDEAUX • bordeaux@epitech.eu
BRUSSELS • bruxelles@epitech.eu
COTONOU • cotonou@epitech.eu
GENEVA • geneve@epitech.eu
LILLE • lille@epitech.eu
LYON • lyon@epitech.eu
MADRID • madrid@epitech.eu
MARSEILLE • marseille@epitech.eu
MONTPELLIER • montpellier@epitech.eu
MULHOUSE • mulhouse@epitech.eu
NANCY • nancy@epitech.eu
NANTES • nantes@epitech.eu
NEW YORK* • new-york@epitech.eu
NICE • nice@epitech.eu
PARIS • paris@epitech.eu
RENNES • rennes@epitech.eu
SAINT-ANDRÉ (Réunion) • reunion@epitech.eu
STRASBOURG • strasbourg@epitech.eu
TIRANA • tirana@epitech.eu
TOULOUSE • toulouse@epitech.eu

EPITECH BARCELONA
c/ Joan Miró, 21
08005 Barcelona
Tel. +34 93 797 88 14
www.epitech.es
barcelona@epitech.eu



www.epitech.eu

Qualification of Expert in Information Technology, NSF code 326n, Professional Certification level I (FR) and level 7 (EU) registered with the RNCP by order of 30/07/2018 published in the J.O. (Government gazette of the French Republic) on 07/09/2018. Non-profit-making association (Law 1901). School officially recognised by the French State.
*Programme created by Epitech at the Technology and Media School, a school in the IONIS Education Group.
Printed November 2019. Private establishment of higher education. This school is a member of IONIS.

{EPITECH.}

POST-SECONDARY • 5-YEAR COURSE

The school of Innovation and Information Technology

Academic year 2023/2024



14 campuses in France
Barcelona • Berlin • Brussels • Cotonou • Geneva • Madrid • New York* • Tirana

*Campus opening soon.
*Program created by Epitech at the Technology and Media School, a school in the IONIS Education Group.

It's at Epitech and nowhere else

Epitech is the school of Software Development and IT expertise. It now offers programs in more than 20 campuses around the World, mainly in Europe. Epitech is neither a technical institution nor an Engineering school; it is a school that offers an innovative education model in line with the changing world of Information Technology. Choosing Epitech means choosing a high-level school. It is an ambitious choice. It means being certain that you will develop the right skills for a lifetime, gaining the capacity to interact with different sectors of a company, assimilating the importance of the international dimension and acquiring soft skills that really matter in the professional context.



WHY EPITECH?



Epitech is the
leading IT
school in Europe,
with almost
20 campuses



Accredited
program
equivalent
to Bachelor +
Master Degree



Innovative
project-based
learning
methodologies
from day 1



Paid
internships
from 2nd year



Development
of a final
entrepreneurial
project
at the end
of the program



99% of
graduates
currently
employed

An international network of 90 partners

The fourth year abroad is a real asset in our students' educational path. So to help students get the best in computing, the school has gradually set up a network of prestigious partners all over the world. This variety of options enables the students to find the right destination for them, in terms of local culture as well as the courses on offer. Some of our most popular international destinations include:

UNITED STATES

- Boston University
- California State University, Long Beach
- California State University, San Marcos
- Murray State University
- The College at Brockport, State University of New York
- University of California, Berkeley
- University of California, San Diego
- Wayne State University

UNITED KINGDOM

- Cardiff Metropolitan University
- Heriot-Watt University
- University of Kent

GERMANY

- Baden-Württemberg Cooperative State University
- Berlin Epitech Campus
- Cologne University of Applied Sciences
- Hof University of Applied Sciences
- Stuttgart University of Applied Sciences

CHINA

- Beijing Institute of Technology
- Beijing Jiaotong University
- Harbin Engineering University
- Hong Kong University of Science and Technology
- Northwestern Polytechnical University
- The Chinese University of Hong Kong
- Tianjin University
- Tongji University
- Tsinghua University
- Wuhan University

CANADA

- Concordia University
- Université Laval
- Université du Québec in Rimouski

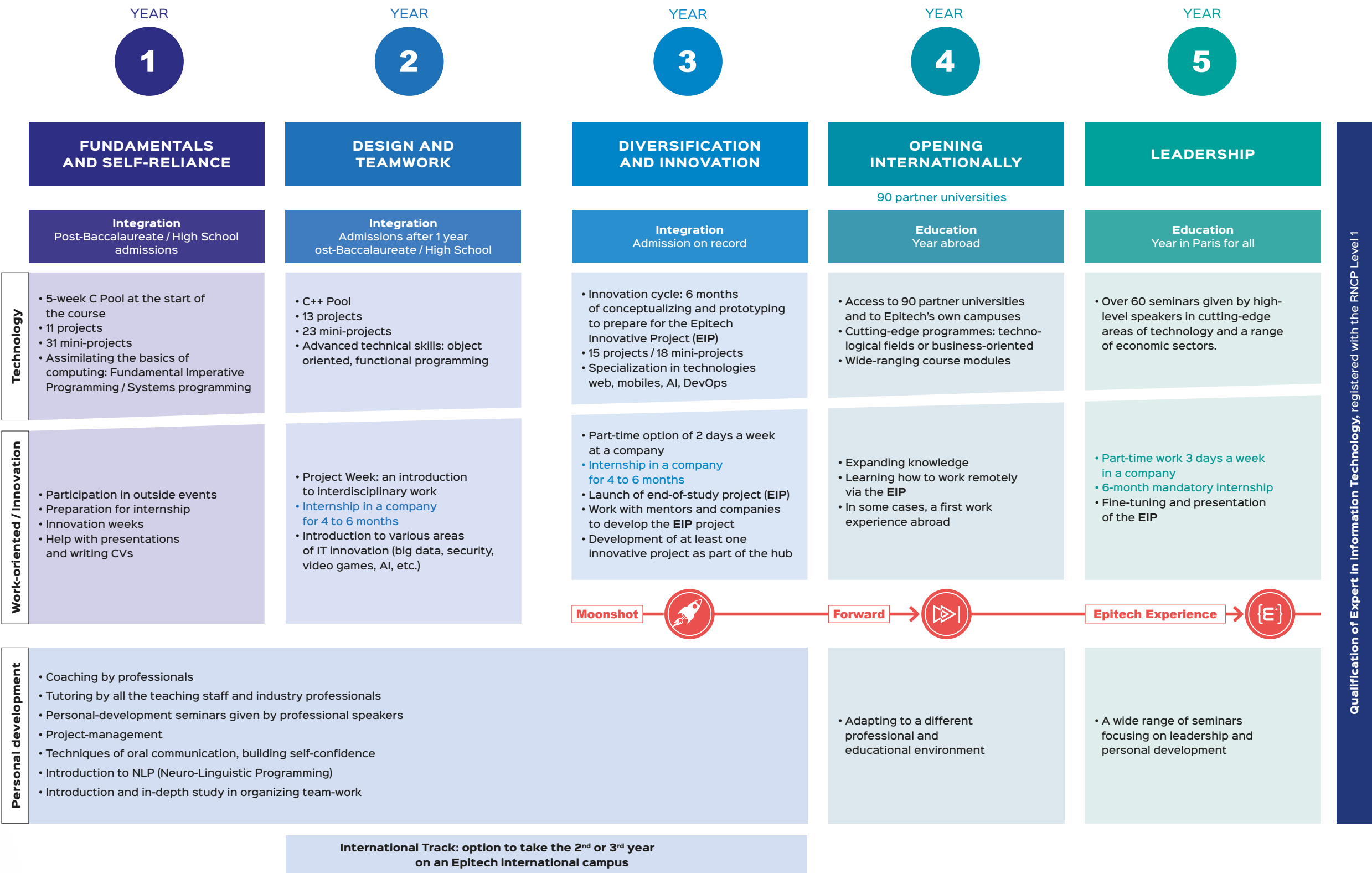
SOUTH KOREA

- Chung-Ang University
- Dankook University
- Inha University
- Keimyung University
- Korea University
- Soongsil University

Trusted by companies

Since it was founded, Epitech has been forming tailor-made partnerships with companies on all its campuses. This approach allows companies to help the school place innovation at the heart of the different economic sectors, at the center of technologies and social issues. These "Player" companies are committed to taking part in the various initiatives organized by the school.

Five years to become a recognized expert



Success in numbers

Epitech offers job opportunities equal to those provided by traditional top level higher education institutions. The Epitech curriculum emphasizes three skills that are increasingly in demand: adaptability, self-development and project sense.

